



Chrome electric grill



CME 410 SLKC.



Smooth chrome electric grill/plancha.

- Same features as model CME 410 SLK, but in chrome finish.
- 30-micron hard chrome coating.
- Power: 3,3 kW.
- Electric supply : 230V single phase or 400V three phases + N + E.
- Variable power control switch and automatic temperature limitation to 300°C.

CME 410 SLKC

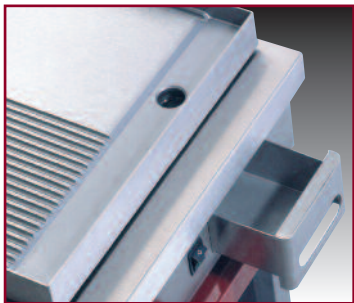
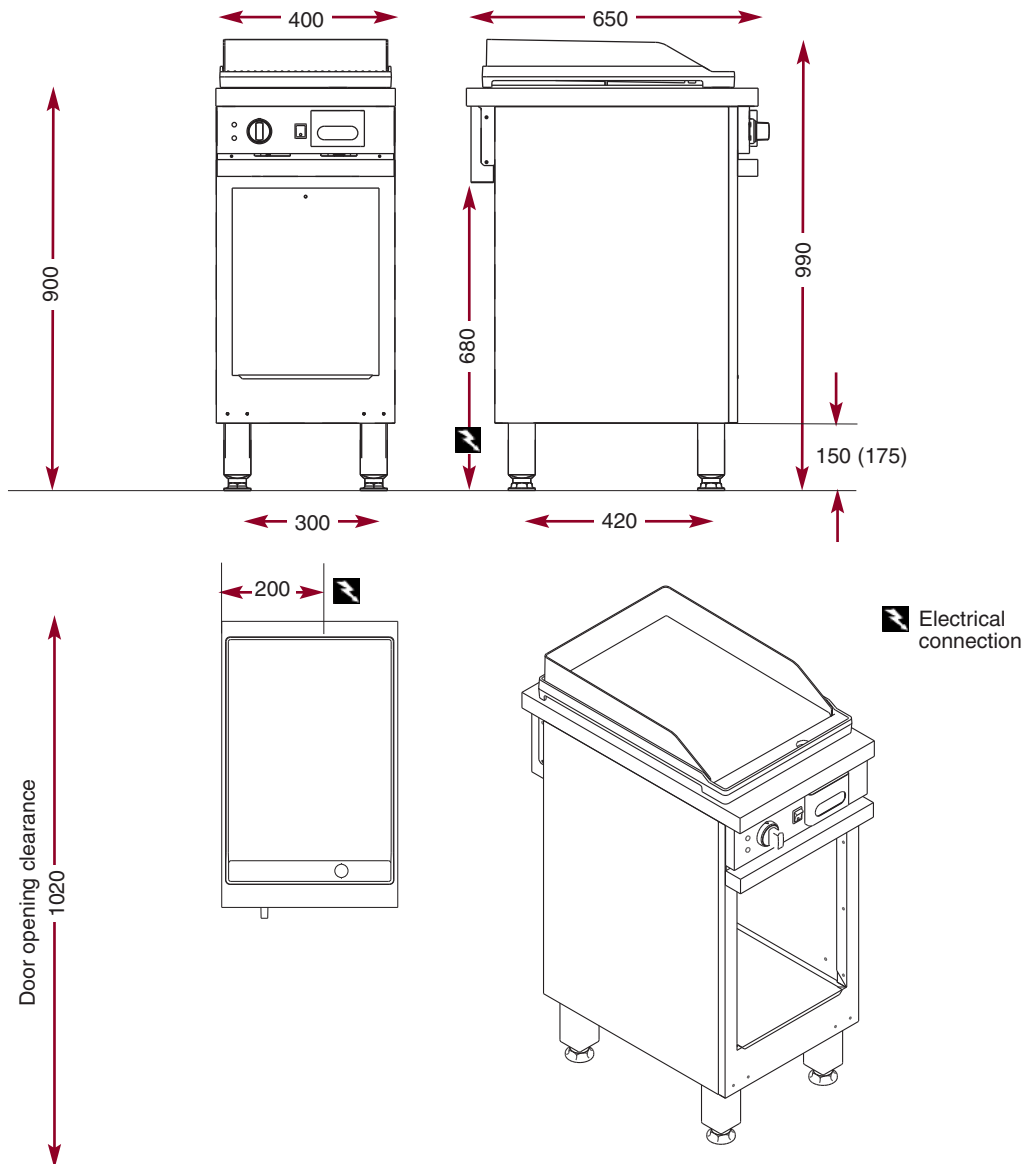
W 400 - D 650 - H 900

Door option 400.

CPM 400

Smooth chrome electric grill/plancha

CME 410 SLKC



Oil trap.



The Chef's Choice.

N° 53 bis - 2